

IBM 8265 Nways Multiprotocol Switching Hub

Installation Instructions

for

ATM Control Point Version 4.0.0

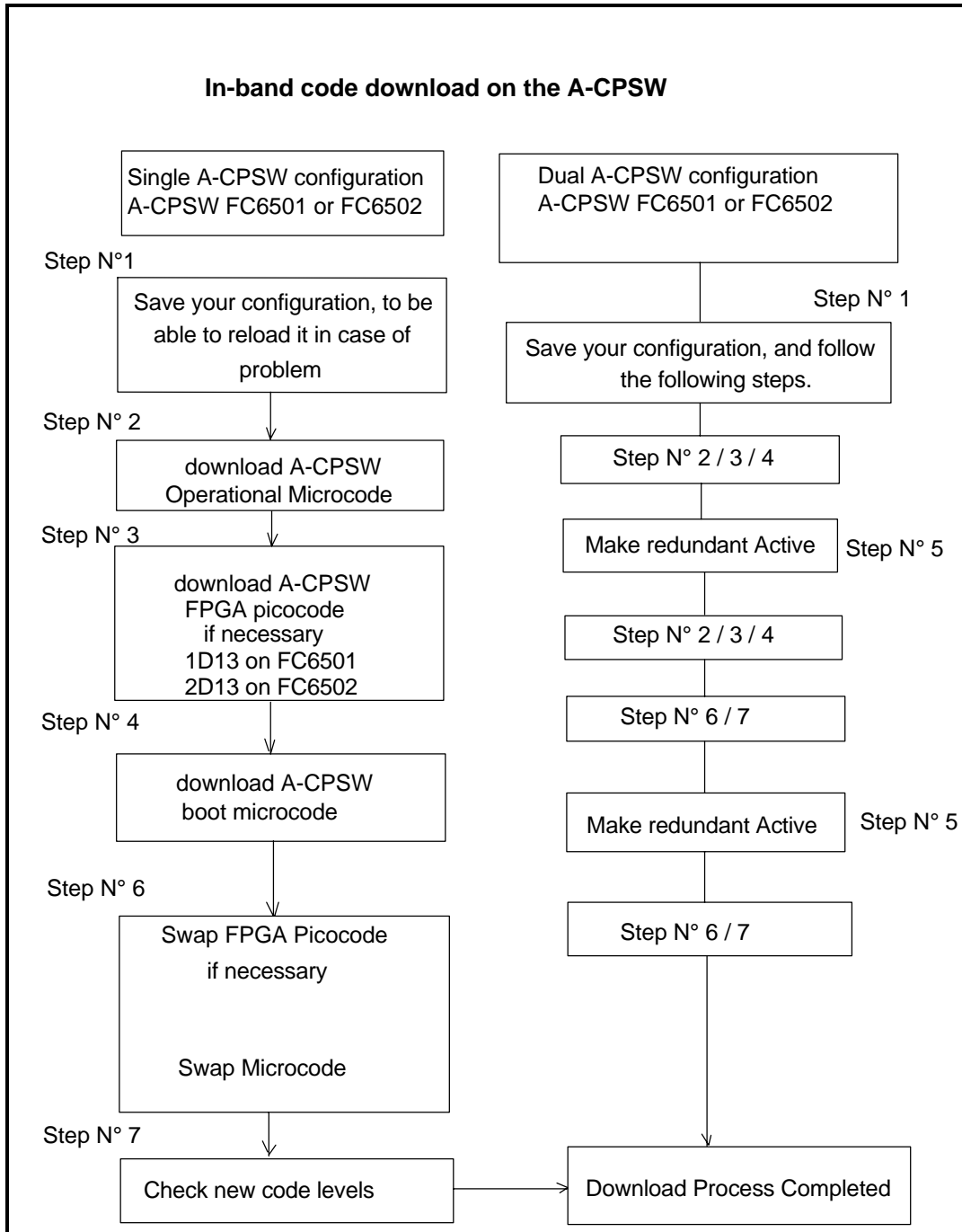
IISP & PNNI

TABLE of CONTENTS

1 Upgrade synopsis	3
2 Code Download Method	4
2.1 Download the 8265 code files on your workstation	4
2.2 In-Band download method	4
2.3 Out of Band Download method	5
3 Upgrading the 8265	7
3.1 Step 1: Saving Configuration before the upgrade	7
3.2 Step 2: Download Inband the 8265 A-CPSW operational microcode	7
3.3 Step 3 : Download Inband the 8265 A-CPSW FPGA picocode	8
3.4 Step 4: Download Inband the 8265 A-CPSW boot microcode	9
3.5 Step 5: Make the backup A-CPSW active	10
3.6 Step 6: Activate the new A-CPSW microcodes and the new FPGA picocode	11
3.7 Step 7: Check the new levels of codes :	12
4 V3 Microcode Level Interoperating with PNNI V4	13
4.1 Within a single peer group	13
4.1 .1 V3/V4 Interoperating microcode levels :	13
4.2 Within a multiple peer group	14
4.2 .1 V3/V4 Interoperating microcode levels :	15
4.2 .2 V3 Nodes limitations	15
4.3 With V2 IISP Link	16
4.3 .1 V3/V4 Interoperating microcode levels :	16
5 8260/8285/8265 ATM Switch Migration	18
5.1 Within one peer group	18
5.1 .1 Migration Process	18
5.2 Within multiple peer group	20
5.2 .1 Migration Process & Minimum PNNI settings	21
5.2 .2 Default UNI Scope to PNNI Level Mappings	22
6 New 8265 ATM Switch R4.0 Installation	23
6.1 Multiple 8265 V4 within a single PNNI Peer Group	23
6.1 .1 Minimum PNNI Settings	23
6.2 Multiple Peer Group	24

6.2 .1 Minimum PNNI Settings 24

1 Upgrade synopsis



2 Code Download Method

2.1 Download the 8265 code files on your workstation

After the download of the files, on an AIX Workstation make sure that the files can be read by all users :

Log in as "root" Set the path to the microcode files directory

Enter: `chmod a+r BOOTV400.BIN`

Enter: `chmod a+r PNNIV400.OPE or IISPV400.ope`

Enter: `chmod a+r FPGA1D13.BIN (A-CPSW FC6501) or FPGA2D13.BIN (A-CPSW FC6502).`

2.2 In-Band download method

You need to perform an inband download operation, using either:

- *Classical IP mode.*

Make sure that your ATM network is configured for IP Over ATM (RFC 1577). To configure your ATM network for IP over ATM:

1. Connect an ARP server to the ATM network. The ARP server will be used to map IP addresses to ATM addresses.
2. For each A-CPSW module verify that the following parameters are configured:
 - ATM address of the ARP server
 - IP address and IP mask of the A-CPSW
 - IP address of the default gateway
3. Verify the IP connectivity to the TFTP server by entering a PING command for each active A-CPSW module.

- *Ethernet or Token Ring LAN-Emulation mode*

Make sure your network is configured in Ethernet or Token Ring LAN-Emulation. To configure your network in Ethernet or Token Ring LAN-Emulation :

1. You must have an Ethernet or Token Ring LAN-Emulation Server configured and ready. You can use the local LES of the 8265.
2. You must configure the Ethernet or Token Ring LAN-Emulation Client on your 8265.
3. You must have a TFTP Server somewhere in the IP network (either on the Emulated LAN, either behind an IP Gateway), and the microcode files installed on that TFTP Server.
4. Check that you can PING the TFTP server from the 8265 LEC.

- *Serial Line IP support (SLIP) mode*

Make sure your workstation can act as a TFTP server .

1. Set up a A-CPSW Configuration Console in SLIP Mode:
2. Then configuring the SLIP interface on the TFTP workstation will allow you to perform Inband Download between your workstation and the A-CPSW.
3. The SLIP connection will be broken after a reset of the A-CPSW and connection will be operational in normal mode.

- *A-CPSW RJ45 Ethernet Port*

2.3 Out of Band Download method

- ***FPGA picocode cannot be downloaded using this method, only boot and operational.***

Once you have the code on your A-disk or hard disk, and you have connected your PC on the RS232 port, using an RS232 emulated terminal, you have to type the following commands on the command line:

MAINTAIN

DOWNLOAD OUT-OF-BAND BOOT (or OPERATIONAL)

P/N: 26L0391	EC : F12686	Sept 9, 1998		Page 6
--------------	-------------	--------------	--	--------

You then have to choose the Xmodem protocol and select the path where your code is located.

Note: This method is not recommended since it takes more time than the In-Band method (15 secs versus 45mins).

3 Upgrading the 8265

- **IMPORTANT**

The following steps are showing an example of Inband Download.

You may log into the A-CPSW console either locally using an ASCII terminal connected to the A-CPSW console port, or remotely using a TELNET session. PLEASE, READ WHAT FOLLOWS CAREFULLY :

1. If you have only one A-CPSW (no redundant) follow the steps 1 to 4 then the steps 6 to 7.
2. If you have two A-CPSWs modules (one redundant A-CPSW) follow the steps 1 to 5 for main A-CPSW and the steps 2 to 4 then 6 and 7 for redundant A-CPSW .Then follow the steps 6 and 7 on main A-CPSW (see upgrade synopsis).

- **IMPORTANT**

It is recommended to perform the following steps with NO OPERATIONAL TRAFFIC flowing your 8265 node. Typically, this would be scheduled as part of a maintenance period. You should save all your configuration parameters before.

3.1 Step 1: Saving Configuration before the upgrade

1. Setup the TFTP parameters by entering the following commands:

- SET TFTP SERVER_IP_ADDRESS <ip address of the TFTP server>*

- SET TFTP FILE_TYPE CONFIGURATION*

- SET TFTP FILE_NAME*

Note : Provide the full path of the file when prompted

2. Start the upload inband procedure by entering: UPLOAD

3.2 Step 2: Download Inband the 8265 A-CPSW operational microcode

Upgrade the new active A-CPSW operational microcode (PCMCIA) as follows:

P/N: 26L0391	EC : F12686	Sept 9, 1998		Page 8
--------------	-------------	--------------	--	--------

1. Configure the TFTP parameters by entering the following commands:
 - *SET TFTP SERVER_IP_ADDRESS <ip address of the TFTP server>*
 - *SET TFTP FILE_TYPE OPERATIONAL*
 - *SET TFTP FILE_NAME*

Type the full path name of the operational microcode file when prompted (its actual name is indicated in the Readme file).

2. Make sure you can reach the TFTP server by entering:
PING <ip address of the TFTP server>
(Stop PING by entering: Ctrl+C)
3. Start the download inband procedure by entering:
DOWNLOAD INBAND
When prompted, type "Y" to confirm.
4. Wait for successful termination of the download operation. The message *Download successful* is displayed.
This may also be checked by displaying the TFTP last transfer result through the command:
"SHOW TFTP".

The command *"SHOW DEVICE"* displays the downloaded operational code level as backup.
It should display : v.4.0.0

3.3 Step 3 : Download Inband the 8265 A-CPSW FPGA picocode

This operation should be done only if your CPSW FPGA level is not up to date, the latest level is 1D13 for A-CPSW FC6501 and 2D13 for A-CPSW FC6502.

1. Configure the TFTP parameters by entering the following commands:
 - *SET TFTP SERVER_IP_ADDRESS <ip address of the TFTP server>*
 - *SET TFTP FILE_TYPE FPGA*
 - *SET TFTP TARGET_MODULE <n>* (n=9 or 11 depending of active A-CPSW position).
 - *SET TFTP FILE_NAME* (Note : *Type the full path name of the FPGA file when prompted*)

- SAVE TFTP*

2. Make sure you can reach the TFTP server by entering:

PING <ip adress of the TFTP server>

(Stop PING by entering: Ctrl+C)

3. Start the download inband procedure by entering:

DOWNLOAD

When prompted, type "Y" to confirm.

Wait for successful termination of the download operation (it may take up to 10 minutes). The message *Download successful* is displayed.

This may also be checked by displaying the TFTP last transfer result with the command: "*SHOW TFTP*".

The command *SHOW MODULE <n> VERBOSE* (n=9 or 11 depending on A-CPSW active position) displays the FPGA level in backup.

It should appear as **1D13** or **2D13** depending of your A-CPSW feature code, respectively FC6501 and FC6502.

3.4 Step 4: Download Inband the 8265 A-CPSW boot microcode

Upgrade the new active A-CPSW boot microcode as follows:

1. Log in as the Administrator on the A-CPSW console

2. Perform the command:

- SET DEVICE MIGRATION NOT_ALLOWED*

3. Upgrade the A-CPSW boot microcode as follows:

- Configure the TFTP parameters by entering the following commands:

- *SET TFTP SERVER_IP_ADDRESS <ip address of the TFTP server>*

- *SET TFTP FILE_TYPE BOOT*

- *SET TFTP FILE_NAME*

- Make sure you can reach the TFTP server by entering:
PING <ip address of the TFTP server>
(Stop PING by entering: Ctrl+C)
- Start the download inband procedure by entering:
DOWNLOAD INBAND
When prompted, type "Y" to confirm.
- Wait for successful termination of the download operation. The message Download successful is displayed.
This may also be checked by displaying the TFTP last transfer result with the command: "*SHOW TFTP*".

The command "*SHOW DEVICE*" displays the new BOOT code version which will become active after an A-CPSW reset.

It should display: **v.4.0.0**.

If you have only one A-CPSW module go to step 6.

If you were upgrading your backup A-CPSW module go to step 6.

3.5 Step 5: Make the backup A-CPSW active

If you have a redundant A-CPSW make the backup one active by entering on the active A-CPSW:

- *SET DEVICE ROLE SECONDARY*
- *SAVE ALL*
- *RESET ATM_SUBSYSTEM*
- *Log in as the Administrator on the A-CPSW console*
- *The hub will reset and the backup A-CPSW will become active. GO TO STEP 2.*

3.6 Step 6: Activate the new A-CPSW microcodes and the new FPGA picocode

DO NOT PERFORM ANY SWAP BEFORE HAVING DOWNLOADED :

- OPERATIONAL CODE
- FPGA CODE (If necessary)
- BOOT CODE

1. Activate the new version of A-CPSW FPGA. picocode by entering the command:

- *SAVE ALL*
- *SWAP FPGA_PICOCODE 9 (or 11). The telnet session, if any, is broken due to the A-CPSW reset.*
- *Login as Administrator on the A-CPSW console.*

2. Activate the new version of A-CPSW microcode by entering the command:

- *SWAP MICROCODE* and confirm with *Y*. *Your remote TELNET session is broken.*
- *Login as Administrator to the A-CPSW*

3. If you do not have redundant A-CPSW, go to step 7.

If you had already swapped new FPGA picocode and microcode on both A-CPSW modules go to step 7. Check the new levels of codes .

The following table lists the microcode and FPGA versions that must be displayed at completion of the upgrade. Use the following commands

- *SHOW DEVICE*
- *SHOW MODULE n VERBOSE (n could be 9 or 11)*

Component	FPGA version	Flash EEPROM version	Boot EEPROM Version
A-CPSW FC6501	1D13	v4.0.0	v4.0.0
A-CPSW FC6502	2D13	v4.0.0	v4.0.0

Now make this A-CPSW be secondary again as it was before the beginning of the migration :

P/N: 26L0391	EC : F12686	Sept 9, 1998		Page 12
--------------	-------------	--------------	--	---------

- SET DEVICE ROLE SECONDARY
- SAVE ALL
- RESET ATM_SUBSYSTEM

The hub will reset and the backup A-CPSW will become active.

Perform the **step 6** again on the other A-CPSW.

3.7 Step 7: Check the new levels of codes :

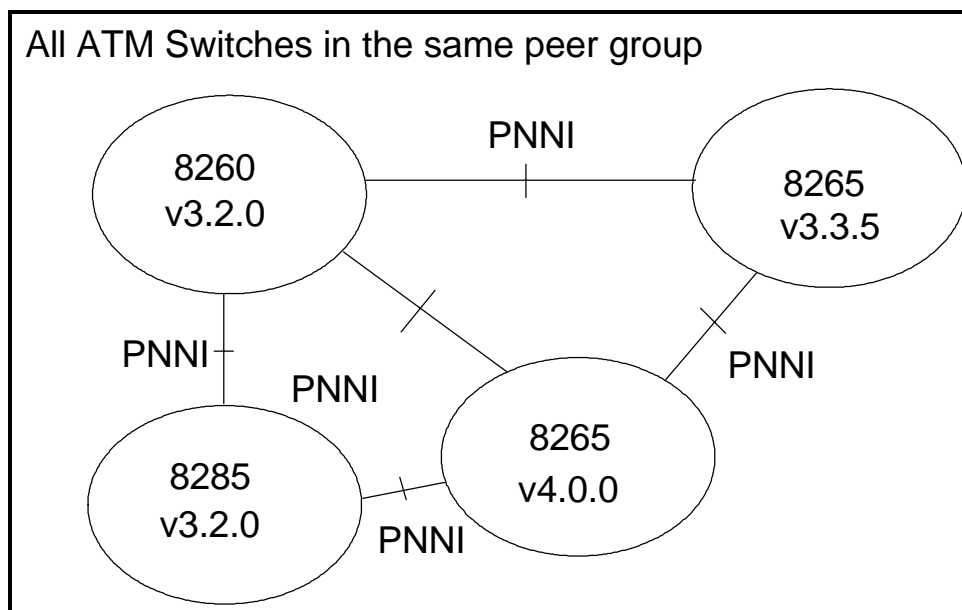
1. Login as ADMINISTRATOR on the active A-CPSW
2. The following table lists the microcode and FPGA versions that must be displayed at completion of the upgrade. Use the following commands
 - SHOW DEVICE
 - SHOW MODULE *n* VERBOSE (*n* could be 9 or 11)

Component	FPGA version	Flash EEPROM version	Boot EEPROM Version
A-CPSW FC6501	1D13	v4.0.0	v4.0.0
A-CPSW FC6502	2D13	v4.0.0	v4.0.0

4 V3 Microcode Level Interoperating with PNNI V4

4.1 Within a single peer group

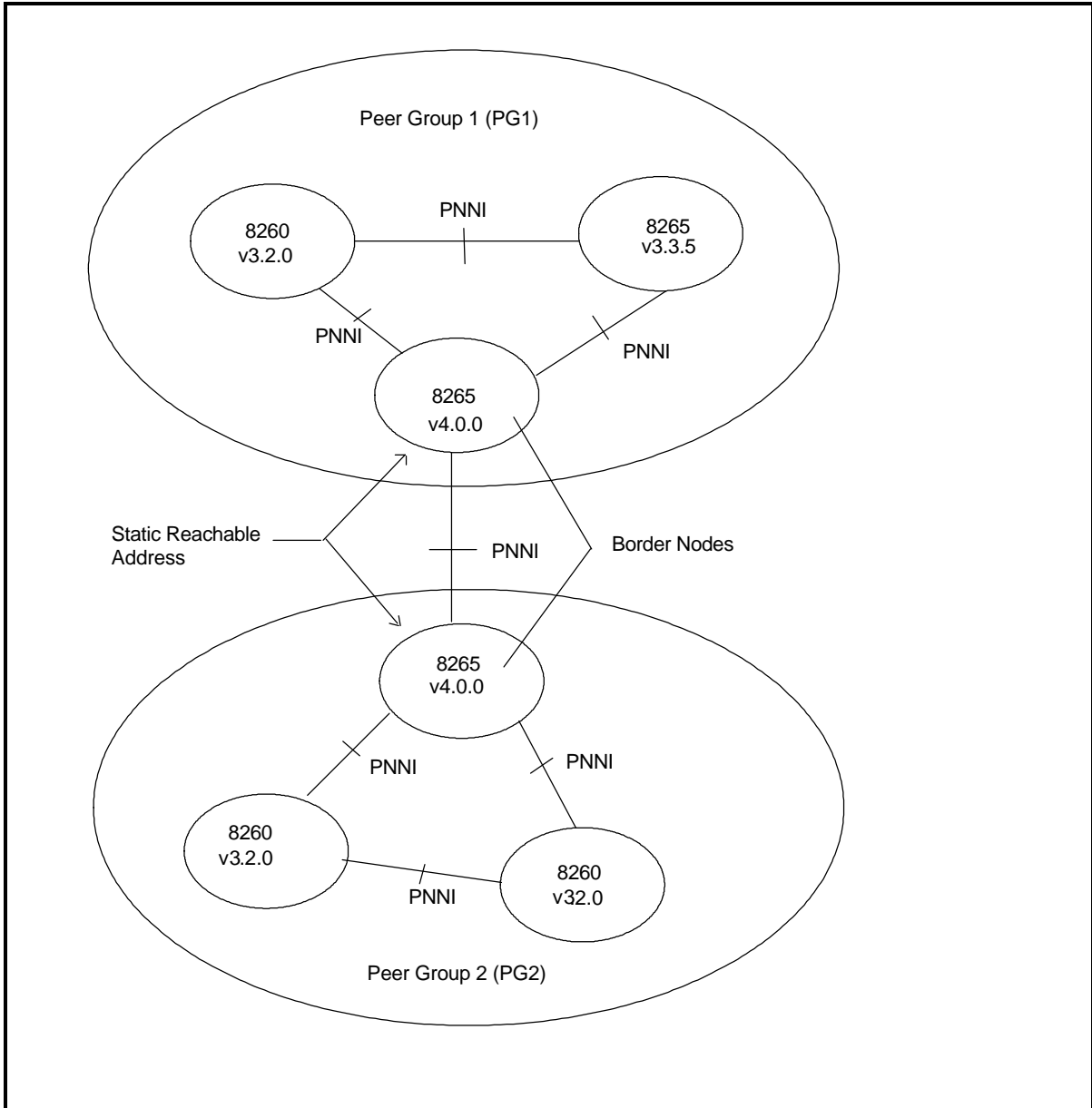
Hierarchy function is disabled, the network will be a flat PNNI Network type.



4.1 .1 V3/V4 Interoperating microcode levels :

ATM Switch	V3	V4
8260	v3.2.0	not supported
8285	v3.2.0	not supported
8265	v3.3.5	v4.0.0

4.2 Within a multiple peer group



4.2 .1 V3/V4 Interoperating microcode levels :

Interoperating microcode levels are the same as the one shown in previous table, V.3.2.0 for 8260 and 8285 and V3.3.5 for 8265.

4.2 .2 V3 Nodes limitations

- No V3 8260/8285 or 8265 ATM Switch can be Border Node in a PNNI Hierarchy Network.
- No V3 8260/8285 or 8265 ATM Switch can be a Peer Group Leader (PGL) in a PNNI Hierarchy Network.

Turn around to V3 Limitation :

- Static Reachable address must be entered manually on each 8265 (V4) Border Node PNNI link to other Peer Group.

Static Reachable address length should be shorter than automatic summarized reachable address to not disturb PNNI routing protocol for PNNI V4.0.0 .

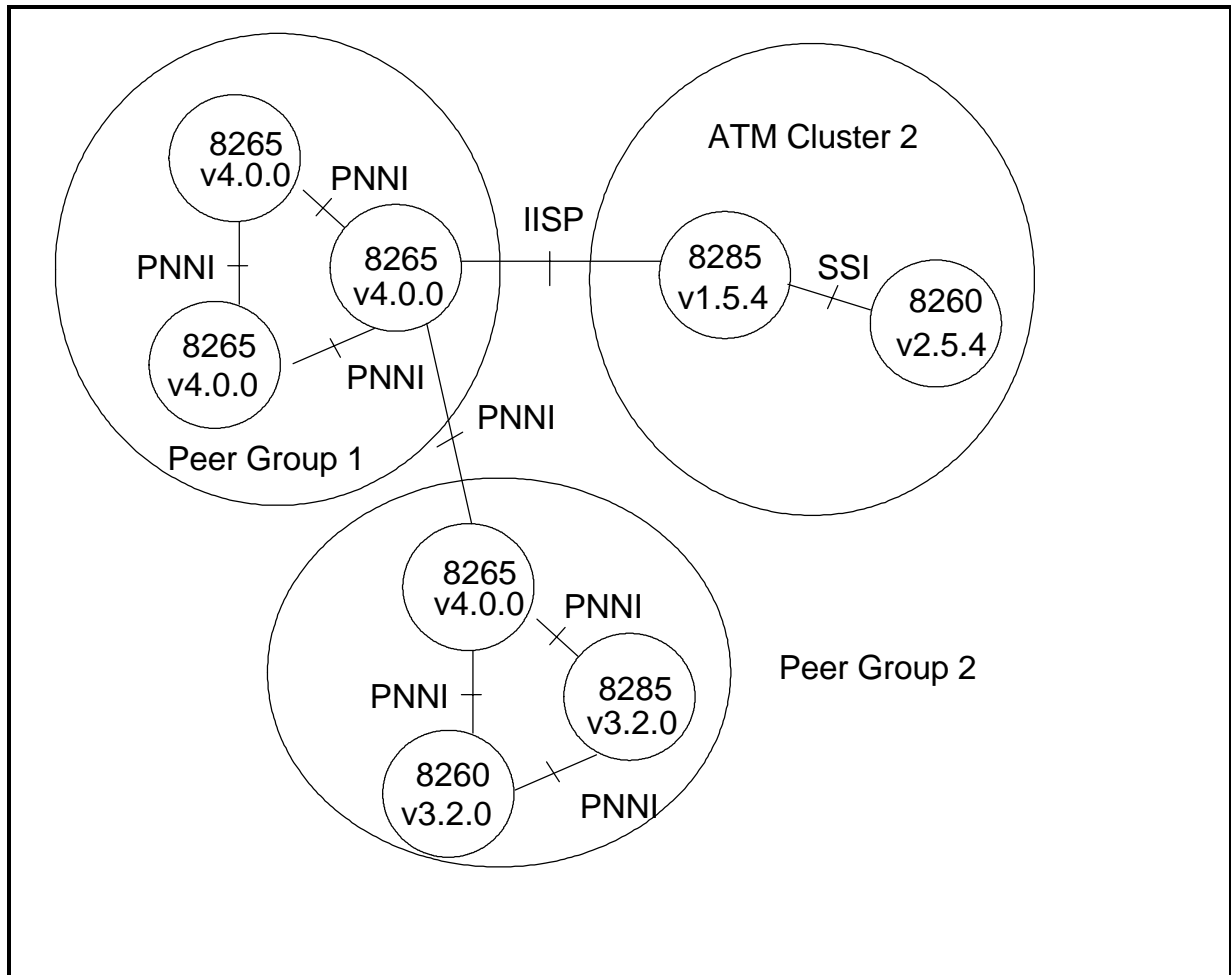
(e.g)

In case over an Inter Peer Groups PNNI link (outside link being an Uplink), an automatic Internal Reachable ATM address is advertised with a given length :

39.99.99.99.99.99.00.00.99.99.02 with length=96 bits

To make this Internal Reachability take precedence over the static one, enter this latter with shorter length=95
SET REACHABLE_ADDR<slot.port> 95 39.99.99.99.99.99.00.00.99.99.02

4.3 With V2 IISP Link



4.3 .1 V3/V4 Interoperating microcode levels :

ATM Switch	V2	V3	V4
8260	v2.5.4	v3.2.0	not supported
8285	v1.5.4	v3.2.0	not supported
8265	Not supported	v3.3.5	v4.0.0

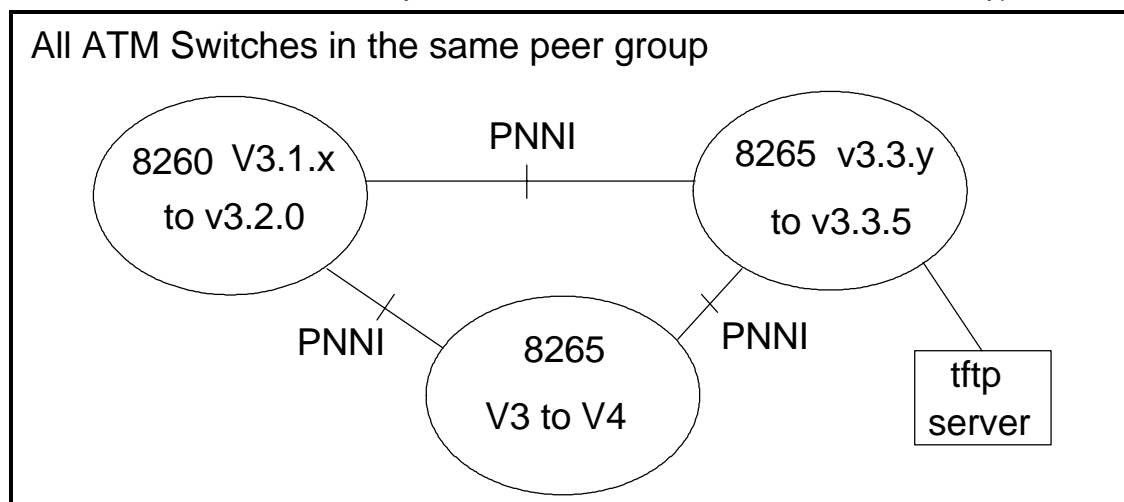
Note

There is no functional problem on an IISP link connected a PNNI peer group to an ATM cluster, the 8260 or 8285 in V2 must be upgraded to respectively **v2.5.4 and v1.5.4**

5 8260/8285/8265 ATM Switch Migration

5.1 Within one peer group

In this case the full PNNI Hierarchy function is disabled, the network is a flat PNNI type Network.



5.1 .1 Migration Process

- Download and activate v3.2.0 on the 8260 ATM Switch (farthest to closest from tftp server).
- Download and activate v3.3.5 on the 8265 ATM Switch (farthest to closest from tftp server).
- Download and activate v4.0.0 on the 8265 ATM Switch (farthest to closest from tftp server)

This PNNI Peer Group will stay a flat PNNI Network, the hierarchy is disabled.

No PNNI setting is required (see Important Notice below)..

Minimum 8260/8285 code required before upgrade to v3.2.0 : **v3.1.7**

Minimum 8265 code required before upgrade to v3.3.5 : **v3.3.2**

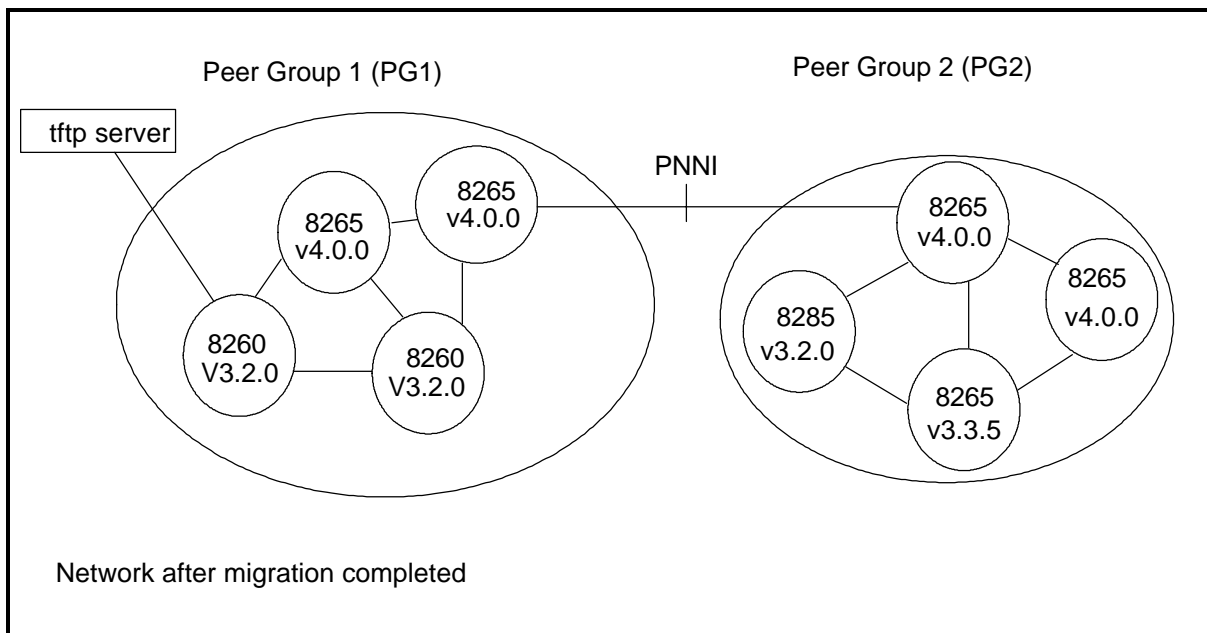
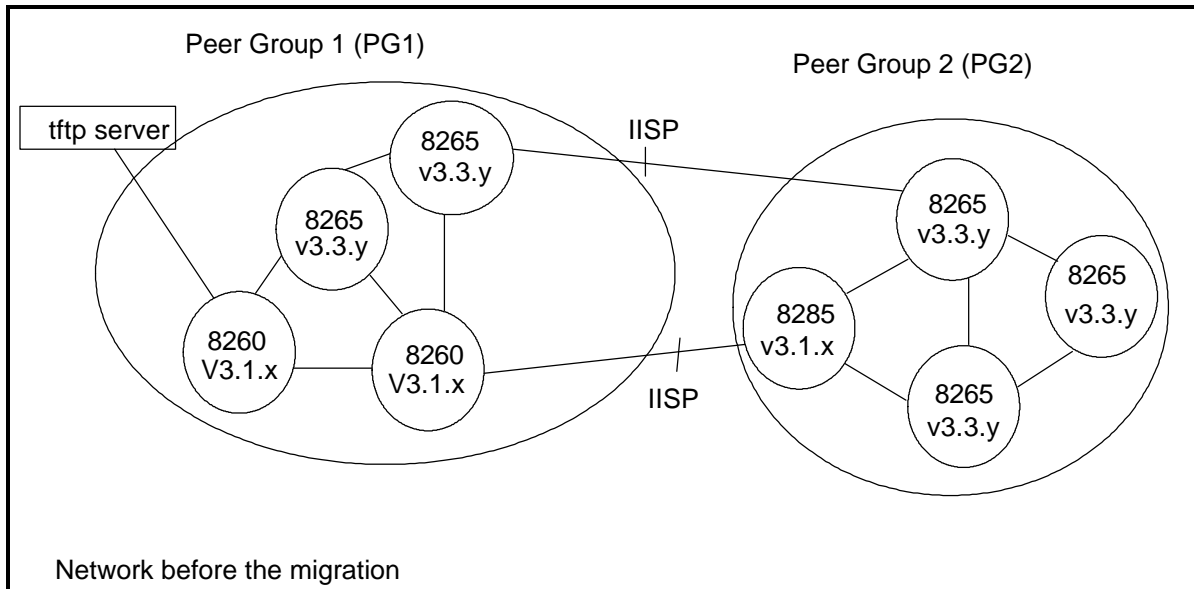
Important Note :

If Node:0 PNNI Level was changed to a level higher than 96 (e.g 88, 80,...), upon migration this higher level will stay the same. But Static Reachable addresses being defaultly migrated to UNI V4 organizational level 1 that maps PNNI scoping level 96 won't even be advertized outside the switch. (Their scoping level being lower than the Node level).

To get rid of this problem, the customer could either, before migration, set back the node:0 level to 96, or,

after migration, set the static reachable address scoping to an higher organizational level (to a level at least equal to the node:0 one).

5.2 Within multiple peer group



5.2 .1 Migration Process & Minimum PNNI settings

I/ Pre-Requisite V3 code Installation and Activation on 8260/8285 and 8265

- Download and Activate v3.2.0 code from the farthest to closest 8260/8285 ATM Switch
- Download and Activate v3.3.5 code from the farthest to closest 8265 ATM Switch

II/ V4 code Installation and Activation on 8265

- Download and Activate v4.0.0 code from the farthest to closest 8265 ATM Switch

Minimum PNNI Hierarchy Settings :

Set Leadership priority at least on 2 nodes per Peer Group. One for the active and one as Backup Peer Group Leader.

Command : SET PNNI NODE:0 LEADER_PRIORITY N

N could be :

0=> Node can not be Peer Group Leader

1-205 => Priority level

III/ Enable PNNI Hierarchy

- In case two IISP links linked the two peer groups, you can remotely via telnet session, Disable the 8265(V4) IISP Port and re-enable it as PNNI Port on both ATM Switches.

IMPORTANT NOTE

- In case only one IISP link exists between the two peer groups, after the IISP port is disabled it will be impossible to join the remote 8265 via a telnet session, the disabled Port will be re-enabled locally as a PNNI Port with a local console.

IV/ Verify the old static Reachable address length, they should be shorter than 96 bits

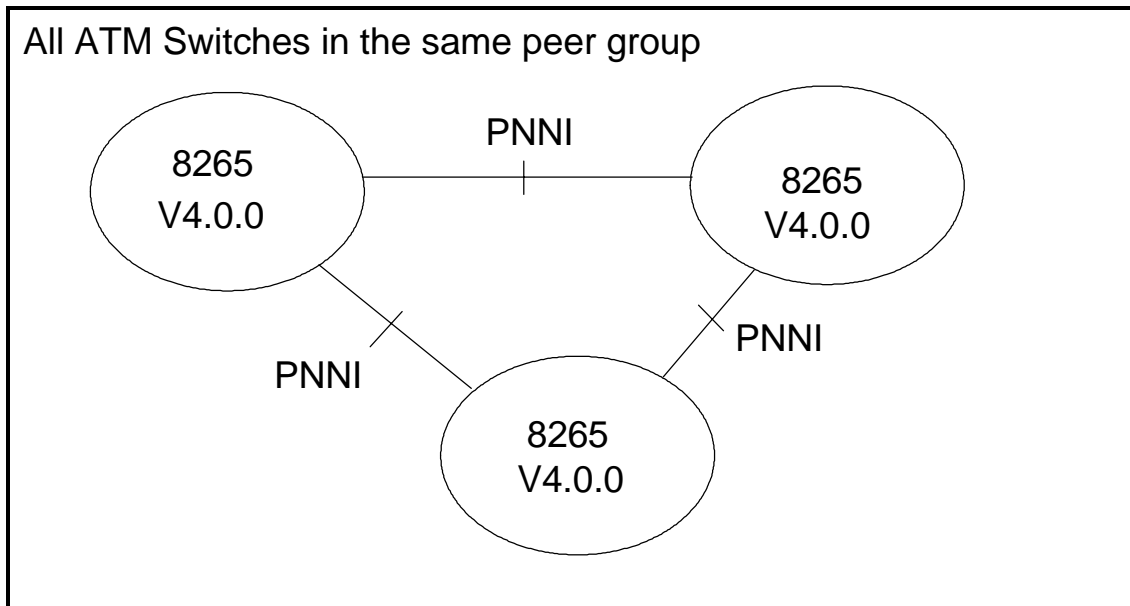
- Address scoping for Static Reachable addresses
 - Defaultly Static Reachable addresses are migrated with scoping level "96" or UNI V4 scope 1-3 .
 - If you change node :0 level to higher value (eg:88), Static Reachable addresses won't be advertized outside the node.
 - To make the node advertized Static Reachable addresses increase their scope to (at least) node:0 level :
use the command : *SET REACHABLE_ADDRESS <slot.port> 88 39.99999999999900009999*
scope organizational : 4
 - Scope organizational : 4 maps Peer Group level 80.
 - Note that there is no other means of entering scope in V4.

5.2 .2 Default UNI Scope to PNNI Level Mappings

UNI scope	PNNI Routing Level Indicator
1-3	96
4-5	80
6-7	72
8-10	64
11-12	48
13-14	32
15 (global)	0

6 New 8265 ATM Switch R4.0 Installation

6.1 Multiple 8265 V4 within a single PNNI Peer Group



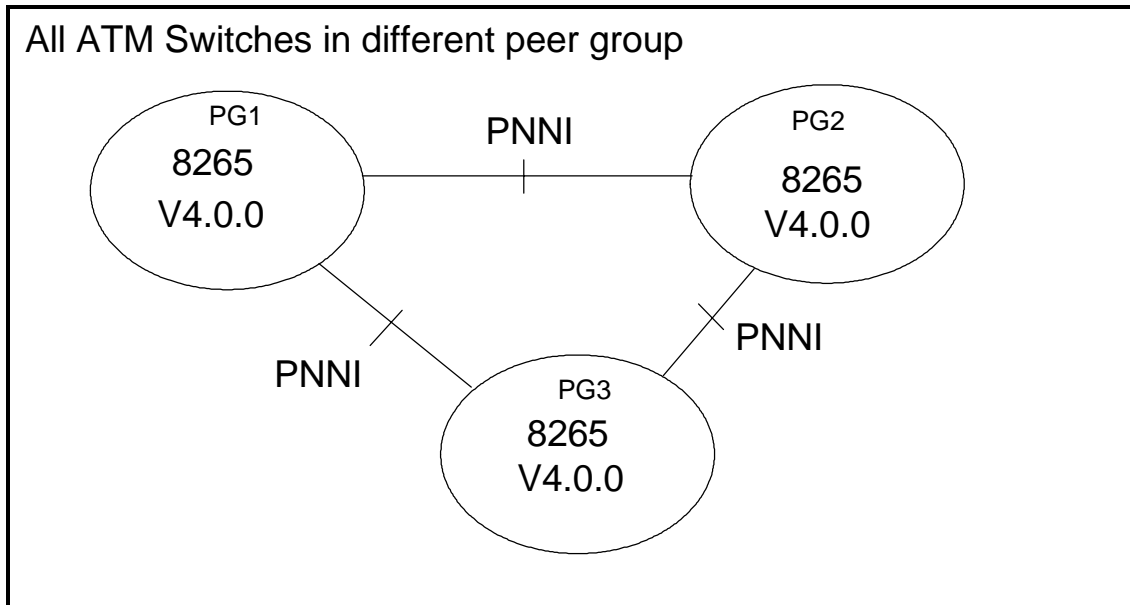
6.1 .1 Minimum PNNI Settings

- ATM address to change on each Node (common Peer Group ID)

Note :

All other settings could be default

6.2 Multiple Peer Group



6.2 .1 Minimum PNNI Settings

- ATM address to change in each Peer Group on each node
- Common Peer Group ID on each node in each Peer Group

Note :

All other settings could be default

END OF DOCUMENT